

# VANGUARD L

4500 - 7000kW



Easy To Install  
And Service



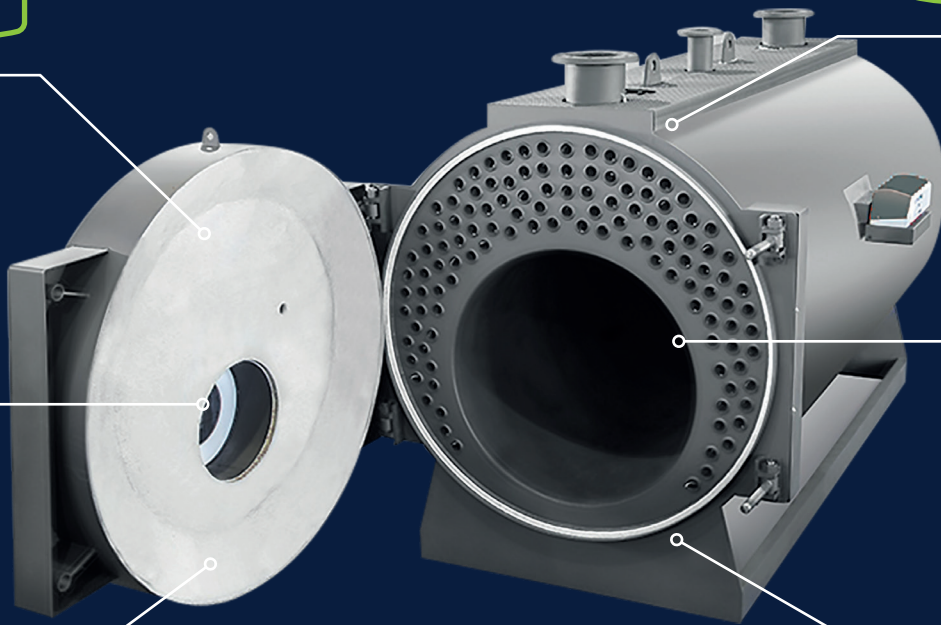
Minimal  
Emissions



Compact Size



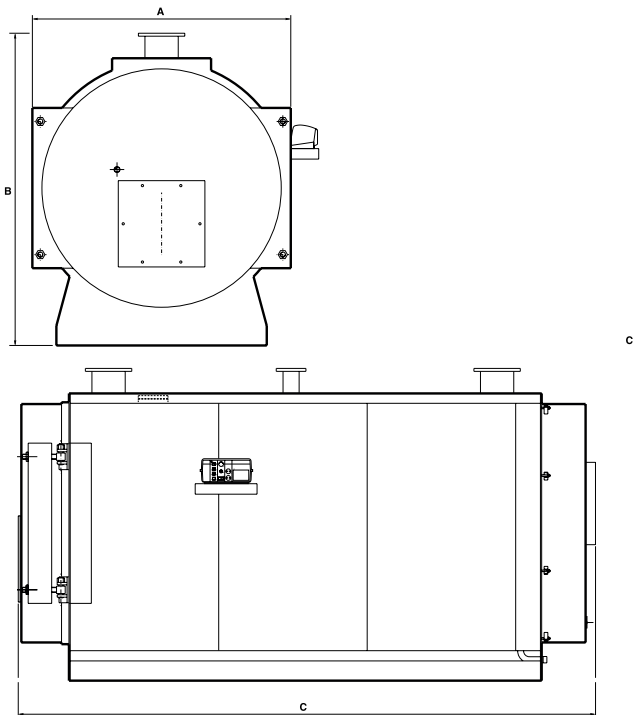
L2  
Compliant



# Features & Specification

Vanguard L boilers are designed with a large combustion chamber positioned in the lower part of the heat exchanger. The Vanguard L range ensures maximum heat transfer efficiency (up to 92.5% nett) and is capable of an impressive output to size ratio.

- High efficiency (full and part load)
- Minimal emissions
- Reverse flame steel heat exchanger
- Compact size
- Easy to install and service
- Minimum return temperature 50°C
- Building Regulations L2 Compliant
- Natural gas, oil fired or dual fuel
- Packaged boiler; can include Nuway or Riello as standard (options on request)
- 6 bar pressure as standard

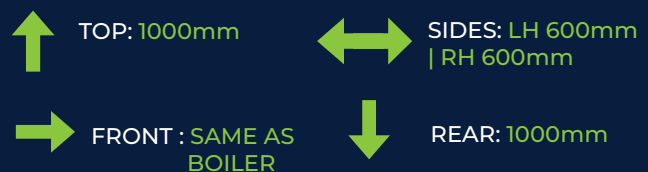


All dimensions in mm

BOILER	DIM A	DIM B	DIM C
4500	2314	2533	4682
5000	2314	2533	4682
5500	2454	2653	4872
6000	2454	2653	4872
6500	2620	2860	5484
7000	2620	2860	5484

## DIMENSIONS & CLEARANCES

The following minimum clearances must be maintained for operation and servicing:



# VANGUARD L 4500 - 7000kW

## TECHNICAL SPECIFICATIONS

MODEL		4500	5000	5500	6000	6500	7000
Maximum Heat Output	kW	4500	5000	5500	6000	6500	7000
Minimum Heat Output	kW	3420	3880	4180	4560	4940	5320
Boiler Water Content	l	6012	6012	7058	7058	7909	7909
Hydraulic Resistance at 15K	mbar	83.4	103	113	132.3	147.1	172
Combustion Chamber Resistance	mbar	88	110	100	120	105	120
Boiler DRY Weight Less Burner Unit	kg	8310	8310	9300	9300	12600	12600
Flue Size	mm	660	660	660	660	720	720
Maximum Flow Temperature	°C	90	90	90	90	90	90
Maximum Burner Blast Tube Dia	mm	500	500	500	500	500	500

### GAS FIRING DATA

Maximum Gas Rate	m <sup>3</sup> /h	496.9	556.08	607.3	668.1	717.7	779.5
Maximum Flue Gas Volume	m <sup>3</sup> /sec	2.58	2.89	3.15	3.47	3.72	4.05
Maximum Flue Gas Temperature at 9.8% CO <sub>2</sub>	°C	133	147	134	147	134	147
Seasonal Efficiency	%	84.27	83.56	84.27	83.56	84.27	83.56

### OIL FIRING DATA

Maximum Oil Rate	l/h	496.9	556.8	607.3	668.1	717.7	779.5
Maximum Flue Gas Volume	m <sup>3</sup> /sec	2.52	2.82	3.07	3.38	3.63	3.94
Maximum Flue Gas Temperature at 13% CO <sub>2</sub>	°C	143	157	143	157	143	157
Seasonal Efficiency	%	84.27	83.56	84.27	83.56	84.27	83.56

### MINIMUM FLOW RATES

Normal Water Flow Rate Temperature Difference 11°C (20°F)	l/s	52.32	58.14	63.95	69.77	75.58	81.39
Minimum Water Flow Rate Temperature Difference 35°C (63°F)	l/s	31.39	34.77	38.25	41.73	45.2	48.7

### CONVERSIONS

1 kW = 3412 Btu/h	1m <sup>3</sup> /h = 35.315 ft <sup>3</sup> /h
1 litre = 0.22 gallons	1m <sup>3</sup> /sec = 2120 ft <sup>3</sup> /min
1 mbar = 0.4 in.w.g.	1l/h = 0.220 gal/h
1 kg = 2.2 lb	1l/s = 13.198 gal/min

\*1 year warranty subject to Terms and Conditions.

**Note:** for boilers with a thermal input of 1MW or greater please contact your Ideal Heating representative to confirm any requirements relating to the Medium Combustion Plant Directive.

GET A QUOTE     

[idealheating.com](http://idealheating.com) | 01482 492251 | [commercial@idealheating.com](mailto:commercial@idealheating.com)

EXPERTS IN  
HEATING