

# COMMERCIAL PRODUCTS TRAINING COURSES







# CONTENTS

- 4 About Ideal Heating Commercial
- 5 Expert Academy – what we offer
- 6 CIBSE approved CPD's

## Commercial condensing boilers:

- 10 Evomax 2
- 12 Imax Xtra 2
- 14 Imax Xtra EL
- 16 Evomod

## Heat Interface Units:

- 20 POD HIU

## Air Source Heat Pumps:

- 24 Introduction to heat pumps
- 26 ECOMOD ASHP and controls
- 28 BPEC heat pump systems qualification
- 30 City and Guilds F Gas 2079 Cat 1

Ideal Heating Commercial are working closely with our **Expert Academy** training managers to deliver high level commercial product training.

If you are looking to expand your knowledge without eating into a busy working week? Expert Academy training is available at several locations. Courses cover all the essential skills and information needed to work with Ideal Heating's commercial product ranges, so you can provide the highest standards of service to your customers.

With a wide range of training courses on offer, you can be sure to find the perfect programme for you.

For more details about the courses in this brochure or further information, please visit our training website:  
[idealcommercialheating.com/training](https://idealcommercialheating.com/training)

Email:  
[enquiries@expertacademy.co.uk](mailto:enquiries@expertacademy.co.uk)



# IDEAL HEATING COMMERCIAL



## ABOUT US

**Ideal Heating Commercial is the UK's leading commercial heating manufacturer of high efficiency commercial heating solutions.**

Operating from our Hull manufacturing plant and offices since 1906, we are one of the few true British manufacturers left in the heating industry.

With over **100 years of experience** and knowledge we have developed a range of low carbon heating solutions for commercial properties.

Armed with everything from hydrogen-ready condensing boilers, commercial heat pumps through to heat interface units, we provide the right heating technology to help the UK on its journey to net zero.

Working closely with our **Expert Academy** whose full time training managers offer a wide range of comprehensive courses, which can be customised for individual installation and servicing companies.



# EXPERT ACADEMY

## WHAT WE OFFER

### Our Training Managers:

Your training manager has extensive experience and qualifications that span across the heating and gas industries. Working closely alongside our product managers, research and development departments and national network of service engineers, they will provide insights and technical information unavailable elsewhere.

We also invest in developing their training techniques and skills so that you benefit from the best possible training experience. Our courses utilise modern training techniques to help you best retain knowledge, build skills and enjoy the experience.

### Our Facilities:

Our Expert Academy Training centres are based in Hull, Leeds and Dunfermline. They are purpose designed buildings providing comfortable and well-equipped training facilities.

Each day you will be provided with free reserved parking, refreshments and lunch.

We also have a range of specialist tools and equipment available for you to try throughout the course. Further exciting developments are due in 2023, watch this space!

### Digital Learning:

Alongside what you learn during the training programme, we are continually adding to our range of free digital training resources. These are available for ongoing refreshers as well and on-site technical support.

### Our Accreditations:

We are approved BPEC and City and Guilds assessment centres so you can be assured we maintain high standards of quality and consistency.

### Our Services:

We believe that the quality of our products can only be matched by the quality of installation, commissioning, and maintenance. For this reason, we invest in making quality training available at the lowest cost possible.

There are no catches or conditions with our low prices or free courses – they are designed to support you do what you do best in the most efficient way possible.

### Training First:

Good quality, technical training is our number one priority. We pride ourselves in providing you honest, balanced information. We don't do sales presentations and we certainly don't try to push anything during our training courses. We also love learning from your experiences - we are all about providing you the best quality training programme.



**EXPERT  
ACADEMY**

**Andrew Johnson**  
Training Director  
Groupe Atlantic UK, ROI & NA



# CIBSE APPROVED CPDS

## AVAILABLE COURSES



Ideal Heating Commercial is accredited by CIBSE to deliver CPD seminars that are highly technical and relevant to your role. Learn more about the latest industry developments and discover new ways to add value, performance and efficiency to your projects.

We can offer our CPD seminars online, or in person - at our site or yours. Our flexible approach means we can tailor our training to suit your business. Each CPD seminar typically lasts 45 minutes to 1 hour. These can be run at lunchtime, so there is minimal disruption to the working day.



### **An introduction to plant room surveys**

An introduction surveying a plant room, with particular focus on surveys for retrofit boiler installations, including access, risk assessments, pre-survey checks and the best practice of commissioning.

### **A review of commercial boiler heat exchanger materials**

Covering the different commercial boiler heat exchanger materials available and why choosing the correct heat exchanger material is important.

### **Introduction to heat pumps - technology and principles**

Heat pumps will play a major part in the future of commercial heating and hot water in the UK. Learn about the technology and principles behind commercial heat pumps to help you with your system design and specification.

### **Heat networks and heat interface units**

Learn more about heat networks and the role that heat interface units play in ensuring the thermal comfort of the end-user and the efficient operation of the network.

The CPD seminars are delivered by our team of Ideal Heating Commercial specification managers, to book visit:

[idealcommercialheating.com/cpd-courses](https://idealcommercialheating.com/cpd-courses)



# COMMERCIAL CONDENSING BOILERS



Made in  
the UK



5 year  
warranty\*



Free  
commissioning



BIM



Hydrogen  
ready

\*5 year warranty subject to Terms and Conditions. 5 years parts and labour warranty available subject to being commissioned by Ideal Heating. Terms and conditions available at [idealheating.com](https://www.idealheating.com)

# EVOMAX 2

## COURSE DETAILS



A comprehensive, combined 1-day programme covering all aspects of the **Evomax 2 commercial condensing boiler**.

This course is run over 1-day, structured in a way that allows flexibility based on attendee's experience.

In general, the morning session will be covered by a short presentation around the basic boiler specification followed by terminology around the hydraulic setup. In addition to this, a detailed look at the capability of the appliance plus the accessories available to fully take advantage of the plethora of programming options. This section is concluded by looking at the boiler electrical connections before wiring up the boiler.

There will be an opportunity to strip the boiler down in terms of a servicing procedure, having a conversation throughout around expectations when commissioning and servicing, alongside best practice fault finding.

Concluding, with an afternoon of programming the boilers from basic to more complex installations including simple cascade and how we manage the cascade.

**What's included:**

- Basic install requirements
- Commissioning and service requirements
- Appliance strip down (service)
- Configuration
- Electronic programming.

**Who can attend:** This course is designed for heating engineers who hold relevant commercial gas accreditations.

**What you need to bring:** All tools and equipment are provided.

**How to book:** Please visit our training website to see available course dates and locations.

Please speak to your business development manager in relation to mobile and customised training options in other locations.

**For more details about the courses in this brochure or further information, please visit our training website:**  
[idealcommercialheating.com/training](https://idealcommercialheating.com/training)  
**Email:**  
[enquiries@expertacademy.co.uk](mailto:enquiries@expertacademy.co.uk)



The **Evomax 2** is the **UK's number one** wall-mounted commercial boiler.



**Price:**  
Free

**Duration:**  
1-day, typically 9am - 4pm with lunch included

**Locations:**  
Hull, Leeds and Dunfermline

**Getting there:**

Hessle, Hull	Leeds	Dalgety Bay, Dunfermline
Our new flagship training centre is based on the Bridgehead Business Park in Hessle, Hull at the head of the historic Humber bridge.	The Leeds training centre is handily located just off the M62.	Our Dalgety Bay training centre is handily located just off the Queens Ferry Crossing / M90 motorway. It is close to Edinburgh and serves the East coast of Scotland.
Groupe Atlantic Training Centre of Excellence Bridgehead Business Park Meadow Rd Hull Hessle HU13 0DG	Groupe Atlantic Training Centre of Excellence 2 Sterling Court Tingley WF3 1EL	Groupe Atlantic Training Centre of Excellence St. David's Drive St David's Business Park Dunfermline Scotland KY11 9PF

# IMAX XTRA 2

## COURSE DETAILS



A comprehensive, combined 1-day programme covering all aspects of the **Imax Xtra 2 commercial condensing boiler**.

The course is run over 1-day, structured in a way that allows flexibility based on attendee's experience.

In general, the morning session will be covered by a short presentation around the basic boiler specification followed by terminology around the hydraulic setup. In addition to this, a detailed look at the capability of the appliance plus the accessories available to fully take advantage of the programming options. This section is concluded by looking at the boiler electrical connections before wiring up the boiler.

There will be an opportunity to strip the boiler down in terms of a servicing procedure, having a conversation throughout around expectations when commissioning and servicing, alongside best practice fault finding.

Concluding, with an afternoon of programming the boilers from basic to more complex installations including simple cascade and how we manage the cascade.

**What's included:**

- Basic install requirements
- Commissioning and service requirements
- Appliance strip down (service)
- Configuration
- Electronic programming.

**For more details about the courses in this brochure or further information, please visit our training website:**  
[idealcommercialheating.com/training](http://idealcommercialheating.com/training)  
**Email:**  
[enquiries@expertacademy.co.uk](mailto:enquiries@expertacademy.co.uk)

**Who can attend:** This course is designed for heating engineers who hold relevant commercial gas accreditations.

**What you need to bring:** All tools and equipment are provided.

**How to book:** Please visit our training website to see available course dates and locations.

Please speak to your business development manager in relation to mobile and customised training options in other locations.



**Imax Xtra 2** is **floor standing and compact** with a small footprint to fit through standard doorways.



**Price:**  
Free

**Duration:**  
1-day, typically 9am - 4pm with lunch included

**Locations:**  
Hull, Leeds and Dunfermline

**Getting there:**

Hessle, Hull	Leeds	Dalgety Bay, Dunfermline
Our new flagship training centre is based on the Bridgehead Business Park in Hessle, Hull at the head of the historic Humber bridge.	The Leeds training centre is handily located just off the M62.	Our Dalgety Bay training centre is handily located just off the Queens Ferry Crossing / M90 motorway. It is close to Edinburgh and serves the East coast of Scotland.
Groupe Atlantic Training Centre of Excellence Bridgehead Business Park Meadow Rd Hull Hessle HU13 0DG	Groupe Atlantic Training Centre of Excellence 2 Sterling Court Tingley WF3 1EL	Groupe Atlantic Training Centre of Excellence St. David's Drive St David's Business Park Dunfermline Scotland KY11 9PF



# IMAX XTRA EL

## COURSE DETAILS



A comprehensive, combined 1-day programme covering all aspects of the **Imax Xtra EL commercial condensing boiler**.

The course is run over 1-day, structured in a way that allows flexibility based on attendee's experience.

In general, the morning session will be covered by a short presentation around the basic boiler specification followed by terminology around the hydraulic setup. In addition to this, a detailed look at the capability of the appliance plus the accessories available to fully take advantage of the programming options. This section is concluded by looking at the boiler electrical connections before wiring up the boiler.

There will be an opportunity to strip the boiler down in terms of a servicing procedure, having a conversation throughout around expectations when commissioning and servicing, alongside best practice fault finding.

Concluding, with an afternoon of programming the boilers including simple cascade and how we manage the cascade.

### What's included:

- Basic install requirements
- Commissioning and service requirements
- Appliance strip down (service)
- Configuration
- Electronic programming.

**Who can attend:** This course is designed for heating engineers who hold relevant commercial gas accreditations.

**What you need to bring:** All tools and equipment are provided.

**How to book:** Please speak to your business development manager or email [enquiries@expertacademy](mailto:enquiries@expertacademy). Training sessions are arranged on request.

**For more details about the courses in this brochure or further information, please visit our training website:**  
[idealcommercialheating.com/training](https://idealcommercialheating.com/training)  
**Email:**  
[enquiries@expertacademy.co.uk](mailto:enquiries@expertacademy.co.uk)



The **Imax Xtra EL** is a **condensing floor standing boiler**, specially designed for commercial applications requiring larger outputs in a compact package.



### Price:

Free

### Duration:

1-day, typically 9am - 4pm with lunch included

### Locations:

Leeds

### Getting there:

#### Leeds

The Leeds training centre is handily located just off the M62.

Groupe Atlantic  
Training Centre of Excellence  
2 Sterling Court  
Tingley  
WF3 1EL





# EVOMOD

## COURSE DETAILS



A comprehensive, combined 1-day programme covering all aspects of the **Evomod commercial condensing boiler**.

The course is run over 1-day, structured in a way that allows flexibility based on attendee's experience.

In general, the morning session will be covered by a short presentation around the basic boiler specification followed by terminology around the hydraulic setup. In addition to this, a detailed look at the capability of the appliance plus the accessories available to fully take advantage of the plethora of programming options. This section is concluded by looking at the boiler electrical connections before wiring up the boiler.

An opportunity to strip the boiler down in terms of a servicing procedure, having

a conversation throughout around expectations when commissioning and servicing, alongside best practice and fault finding.

Concluding, with an afternoon of programming the boilers including simple cascade and how we manage the cascade.

### What's included:

- Basic install requirements
- Commissioning and service requirements
- Appliance strip down (service)
- Configuration
- Electronic programming.

The **Evomod** has up to **1MW output** from a single unit, ideal for smaller spaces.



**Price:**  
Free

**Duration:**  
1-day, typically 9am - 4pm with lunch included

**Locations:**  
Leeds

**Who can attend:** This course is designed for heating engineers who hold relevant commercial gas accreditations.

**What you need to bring:** All tools and equipment are provided.

**How to book:** Please speak to your business development manager or email [enquiries@expertacademy](mailto:enquiries@expertacademy). Training sessions are arranged on request.

**For more details about the courses in this brochure or further information, please visit our training website:**  
[idealcommercialheating.com/training](https://idealcommercialheating.com/training)  
**Email:**  
[enquiries@expertacademy.co.uk](mailto:enquiries@expertacademy.co.uk)

### Getting there:

#### Leeds

The Leeds training centre is handily located just off the M62.

Groupe Atlantic  
Training Centre of Excellence  
2 Sterling Court  
Tingley  
WF3 1EL



# HEAT INTERFACE UNITS (HIU)

POD HEAT INTERFACE UNITS



Made in  
the UK



2 year  
warranty\*



Free  
commissioning



BESA  
approved



BIM

\*2 year warranty subject to Terms and Conditions. 2 years parts and labour warranty available subject to being commissioned by Ideal Heating or an authorised representative. Terms and conditions available on request.



# POD HEAT INTERFACE UNITS



## COURSE DETAILS

Our standard 1-day course is structured in a way that allows flexibility based on attendee's experience and covers all aspects of the **POD heat interface units**.

The beginning of the session provides an introduction and overview to heat networks. This includes general design and configuration, how they provide heating solutions to help decarbonise and other associated benefits.

A comprehensive product range and features overview is provided on the POD HIU, before moving on to cover installation and commissioning requirements.

There is an opportunity to use the recommended testing equipment involved in processes along with the chance to remove components and complete maintenance activities. You will also have the opportunity to look at controls, heat meters and accessories.

**What's included:**

- An overview of Heat Networks (optional based on groups experience)
- POD HIU product overview
- Installation and commissioning
- Maintenance and diagnostic
- Controls and programming.

**Who can attend:** This course is designed for heating engineers who work or are preparing to work on our Ideal POD heat interface units.

**What you need to bring:** All tools and equipment are provided.

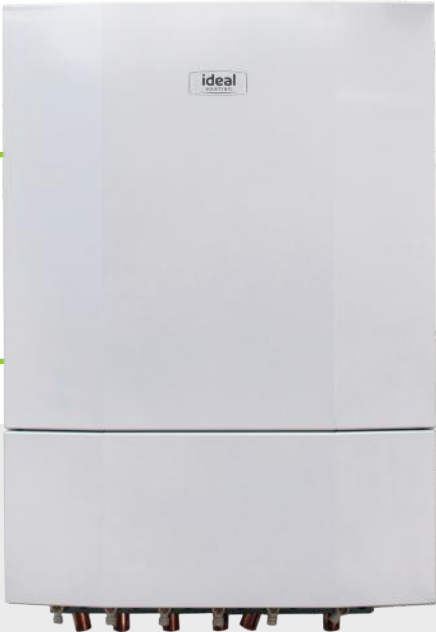
**How to book:** Please visit our training website to see available course dates and locations.

Please speak to your business development manager in relation to mobile and customised training options in other locations.

**For more details about the courses in this brochure or further information, please visit our training website:**  
[idealcommercialheating.com/training](https://idealcommercialheating.com/training)  
**Email:**  
[enquiries@expertacademy.co.uk](mailto:enquiries@expertacademy.co.uk)



The **POD HIU** is designed to meet all the requirements of the heat network installer, **operator** and **end user**.



**Price:**  
Free

**Duration:**  
1-day, typically 9am - 4pm with lunch included

**Locations:**  
Hull, Leeds and Dunfermline

**Getting there:**

Hessle, Hull	Leeds	Dalgety Bay, Dunfermline
Our new flagship training centre is based on the Bridgehead Business Park in Hessle, Hull at the head of the historic Humber bridge.	The Leeds training centre is handily located just off the M62.	Our Dalgety Bay training centre is handily located just off the Queens Ferry Crossing / M90 motorway. It is close to Edinburgh and serves the East coast of Scotland.
Groupe Atlantic Training Centre of Excellence Bridgehead Business Park Meadow Rd Hull Hessle HU13 0DG	Groupe Atlantic Training Centre of Excellence 2 Sterling Court Tingley WF3 1EL	Groupe Atlantic Training Centre of Excellence St. David's Drive St David's Business Park Dunfermline Scotland KY11 9PF

# AIR SOURCE HEAT PUMPS



ECOMOD COMMERCIAL  
HEAT PUMPS



5 year  
warranty\*



Free  
commissioning



Suitable for  
commercial  
properties



Low  
environmental  
impact



BIM

\*2 year warranty extended to 5 years if commissioned by Ideal Heating. Terms and conditions available at [idealheating.com](https://www.idealheating.com)



# INTRODUCTION TO HEAT PUMPS



Air source heat pumps and  
ECOMOD commercial heat pumps

## COURSE DETAILS

**An informative day designed to introduce those new to air source heat pumps (ASHP).**

The course is run over 1-day that begins with introductory explanations to heat pump technology. Starting with the basics we begin with what different types of heat pumps there are available and how the technology works. Once the basic method of operation is covered, we move on to positioning and installation considerations, operating principles, and integration with existing systems.

Following this general overview, we explore the ECOMOD range of ASHP and control options.

**Who can attend:** This course is designed for anyone wanting a comprehensive introduction to heat pumps and the ECOMOD commercial heat pump range.

**What you need to bring:** All tools and equipment are provided.

**How to book:** Please visit our training website to see available course dates and locations.

Please speak to your business development manager in relation to mobile and customised training options in other locations.

**What's included:**

- Types of heat pumps and basic operating principles
- Location and installation considerations
- Options for application of use
- ECOMOD product range overview
- Site requirements
- Commissioning and a basic introduction to controls and configuration options
- Service and maintenance requirements.

**For more details about the courses in this brochure or further information, please visit our training website:**  
[idealcommercialheating.com/training](https://idealcommercialheating.com/training)  
**Email:**  
[enquiries@expertacademy.co.uk](mailto:enquiries@expertacademy.co.uk)



**ECOMOD** air source heat pumps - designed with commercial buildings in mind to help deliver the **next generation of heating solutions.**



**Price:** Free  
**Duration:** 1-day, typically 9am - 4pm with lunch included  
**Locations:** Hull and Leeds

**Getting there:**

Hessle, Hull	Leeds
Our new flagship training centre is based on the Bridgehead Business Park in Hessle, Hull at the head of the historic Humber bridge.	The Leeds training centre is handily located just off the M62.
Groupe Atlantic Training Centre of Excellence Bridgehead Business Park Meadow Rd Hull Hessle HU13 0DG	Groupe Atlantic Training Centre of Excellence 2 Sterling Court Tingley WF3 1EL

# ECOMOD ASHP AND CONTROLS



## COURSE DETAILS

This course is designed for those who are familiar with ASHP technology and wish to understand the **ECOMOD commercial heat pump product range**.

The course is run over 1-day that begins with a comprehensive overview of the ECOMOD range and specification considerations, including hydraulic and system control options.

### What's included:

- Product overview including features and accessories
- Components
- Installation, minimum system volumes and flowrates
- Lifting and handling
- Electrical supply requirements
- Commissioning and maintenance
- Controls options and configurations.

**Who can attend:** This course is designed for anyone wanting a comprehensive introduction to heat pumps and the ECOMOD range.

**What you need to bring:** All tools and equipment are provided.

**How to book:** Please visit our training website to see available course dates and locations.

Please speak to your business development manager in relation to mobile and customised training options in other locations.

For more details about the courses in this brochure or further information, please visit our training website:  
[idealcommercialheating.com/training](https://idealcommercialheating.com/training)  
Email:  
[enquiries@expertacademy.co.uk](mailto:enquiries@expertacademy.co.uk)



**ECOMOD** air source heat pumps - designed with commercial buildings in mind to help deliver the **next generation of heating solutions.**



**Price:** Free  
**Duration:** 1-day, typically 9am - 4pm with lunch included  
**Locations:** Hull and Leeds

### Getting there:

Hessle, Hull	Leeds
Our new flagship training centre is based on the Bridgehead Business Park in Hessle, Hull at the head of the historic Humber bridge.	The Leeds training centre is handily located just off the M62.
Groupe Atlantic Training Centre of Excellence Bridgehead Business Park Meadow Rd Hull Hessle HU13 0DG	Groupe Atlantic Training Centre of Excellence 2 Sterling Court Tingley WF3 1EL



# BPEC HEAT PUMP SYSTEMS QUALIFICATION



## COURSE DETAILS

The BPEC heat pump systems programme is recognised as a demonstration of competence for the Microgeneration Certification Scheme (MCS). Over the duration of 3 -days, this course is designed to give heating engineers the foundation knowledge required to correctly install heat pumps in line with industry best practice and guidelines. Following the completion of this course it is recommended that you complete further product specific training for the chosen product ranges you intend to work on.

**Who can attend:** This course is designed for practicing heating engineers or those involved in heating systems, design and specification.

**Attendees must have and provide evidence of the following:**

- N/SVQ Level 2/3 in plumbing / heating and ventilation / gas installation and maintenance or equivalent earlier qualifications.
- Minimum 3-years of experience of installing wet central heating systems evidenced by Gas Safe Register, MCS, OFTEC, etc.
- AND, if not included within the above qualifications' attendees must hold a valid Water Regulations / Water Byelaws qualification. You may complete these with us prior to the 3-day heat pump systems course.

**What's included:**

- Heat pumps in context
- How a heat pump works - principles and components
- Insulation, heat losses and the effect of heating system design
- Domestic hot water, buffer tanks and solar coils
- Health and safety
- Heat pump installation considerations
- Maintenance troubleshooting.

**What you need to bring:** Passport photos, photo ID and evidence of qualifications - full details will be provided on your booking.

**How to book:** Due to the high demand for this qualification, please contact your business development manager in the first instance to register interest. Please note minimum lead time for bookings of 8-10 weeks.

**For more details about the courses in this brochure or further information, please visit our training website:**

[idealcommercialheating.com/training](https://idealcommercialheating.com/training)

**Email:**

[enquiries@expertacademy.co.uk](mailto:enquiries@expertacademy.co.uk)

**Price:**  
£595 + VAT (Voucher schemes and discounts maybe available).

**Duration:**  
3-days, typically 9am - 4pm with lunch included

**Locations:**  
Hull and Leeds

**Getting there:**

Hessle, Hull	Leeds
Our new flagship training centre is based on the Bridgehead Business Park in Hessle, Hull at the head of the historic Humber bridge.	The Leeds training centre is handily located just off the M62.
Groupe Atlantic Training Centre of Excellence Bridgehead Business Park Meadow Rd Hull Hessle HU13 0DG	Groupe Atlantic Training Centre of Excellence 2 Sterling Court Tingley WF3 1EL



# CITY AND GUILDS F GAS 2079 CAT1



## COURSE DETAILS

A comprehensive, combined 5-day programme providing the knowledge and practical skills required to undertake leak checking, recovery, installation, service, and maintenance of heat pump equipment containing refrigerants.

Our training session will provide details on basic refrigeration systems, terminology, principles, units and how these relate to theory and thermodynamics of vapour compression and refrigerant systems. The course is a blended mix of theory, practical demonstration, with plentiful hands-on practice for all attendees. Assessments include a closed-book online exam and observed practical tasks.

On successful completion, a Level 2 award in F-Gas and ODS Regulations Category I City & Guilds 2079-11 certificate will be issued. The qualification does not have an expiration period.

**Who can attend:** Candidates with relevant engineering skills or working as a refrigeration, air conditioning and heat pump system engineer and have relevant skills and knowledge.

**What you need to bring:** Passport photos, photo ID and evidence of qualifications - full details will be provided on your booking.

**How to book:** Due to the high demand for this qualification, please contact your business development

### What's included:

- Causes and effects of global warming and climate change
- Identify stationary RAC, and heat-pump systems components, functions and leakage risks
- Hazards and safe working practices for the installation, commissioning, and handling of refrigerants
- Fabricate and examine refrigerant pipework
- Undertake pressure testing, evacuation and record completion
- Undertake refrigerant charging, leak charging and record-keeping
- Undertake recovery of refrigerant and oil and prepare for disposal.

manager in the first instance to register interest. Please note minimum lead time for bookings of 8-10 weeks.

**For more details about the courses in this brochure or further information, please visit our training website:**  
[idealcommercialheating.com/training](https://idealcommercialheating.com/training)  
**Email:**  
[enquiries@expertacademy.co.uk](mailto:enquiries@expertacademy.co.uk)

### Price:

£1095 + VAT (Voucher schemes and discounts maybe available).

### Duration:

5 days, typically 9am - 4pm with lunch included

### Locations:

Hull

### Getting there:

**Hessle, Hull**

Our new flagship training centre is based on the Bridgehead Business Park in Hessle, Hull at the head of the historic Humber bridge.

Groupe Atlantic  
Training Centre of Excellence  
Bridgehead Business Park  
Meadow Rd Hull  
Hessle  
HU13 0DG













Book online at:  
[idealcommercialheating.com/training](http://idealcommercialheating.com/training)

Training:  
**01482 498660**  
E: [enquiries@expertacademy.co.uk](mailto:enquiries@expertacademy.co.uk)

Sales support:  
**0844 543 6060**  
E: [commercial@idealheating.com](mailto:commercial@idealheating.com)

Ideal Heating, PO Box 103, National Avenue,  
Kingston upon Hull, East Yorkshire, HU5 4JN  
E: [enquiries@idealheating.com](mailto:enquiries@idealheating.com)

