

VISCOOUNT

GTS14 - GTS25



Minimal Emissions



Easy to Install



Compact Size



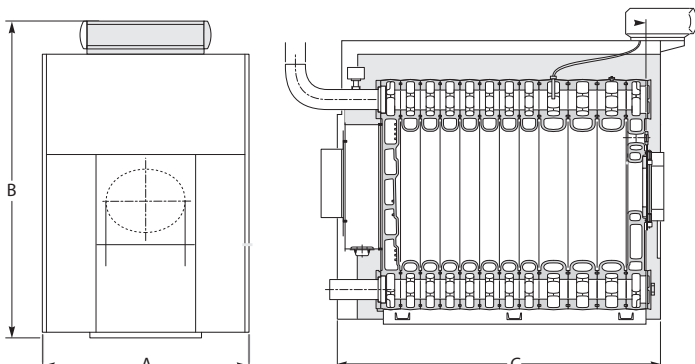
Floor Standing



Features & specification

This range of pressurised hot water boilers is designed for connecting to a flue pipe which require a separate automatic fuel-oil or gas burner. The heat output of Viscount GTS boilers range from 812 kW to 1450 kW models. The cast iron Viscount GTS boiler range is designed to obtain the largest heat exchange surface in the most space efficient size, yet maintains long life and easy servicing. Low modulated temperature operation down to 40°C allows more fuel savings.

- High efficiency (full and part load)
- Minimal emissions
- 4 pass cast iron heat exchanger
- Compact size install and service
- Easy to install and service
- Minimum return temperature 40°C
- Building Regulations L2 Compliant
- Gas fired, oil fired or dual fuel
- Packaged boiler; can include Nuway or Riello burner as standard (options on request)
- Left or right hinged burner door
- 6 bar maximum operating pressure
- Site assembly



BOILER	DIM A	DIM B	DIM C
GTS 14	1172	1670	2105
GTS 15	1172	1670	2245
GTS 16	1172	1670	2355
GTS 17	1172	1670	2445
GTS 18	1172	1670	2555
GTS 19	1172	1670	2645
GTS 20	1172	1670	2845
GTS 21	1172	1670	2955
GTS 22	1172	1670	3045
GTS 23	1172	1670	3155
GTS 24	1172	1670	3245
GTS 25	1172	1670	3355

DIMENSIONS & CLEARANCES

The following minimum clearances must be maintained for operation and servicing:

- ↑ TOP: 850MM
- ↔ SIDES: LH 500/1200MM[†] | RH 500/1200MM[†] 500mm
- ↓ REAR: SEE BROCHURE FOR DETAILS
- FRONT: 1500MM^{††}

[†]Door opening side largest measurement ^{††}May be reduced dependent on burner

VISCOUNT GTS14 - GTS25

TECHNICAL SPECIFICATIONS

MODEL		GTS 14	GTS 15	GTS 16	GTS 17	GTS 18	GTS 19	GTS 20	GTS 21	GTS 22	GTS 23	GTS 24	GTS 25
No. of Sections		14	15	16	17	18	19	20	21	22	23	24	25
Maximum Heat Output	kW	812	870	928	986	1044	1102	1160	1218	1276	1334	1392	1450
Minimum Heat Output	kW	754	812	870	928	986	1044	1102	1160	1218	1276	1334	1392
Boiler Water Content	l	655	693	731	769	807	845	905	743	981	1019	1057	1095
Hydraulic Resistance at 11K	mbar	55.8	64.5	26.0	27.9	32.5	35.3	40.0	44.1	48.3	52.6	57.6	62.3
Hydraulic Resistance at 20K	mbar	16.9	19.5	7.9	8.4	9.8	10.7	12.1	13.3	14.6	15.9	17.4	18.8
Combustion Chamber Resistance	mbar	2.3	2.4	2.5	2.6	2.7	2.85	3	3.1	3.2	3.3	3.4	3.5
Boiler DRY Weight Less Burner Unit	kg	3171	3364	3561	3756	3955	4124	4343	4538	4734	4930	5107	5297
Flue Size	mm		450			500				500 x 700 max			
Maximum Flow Temperature	mm	90	90	90	90	90	90	90	90	90	90	90	90

GAS FIRING DATA

Maximum Gas Rate	m ³ /h	84.4	90.4	96.4	102.4	108.5	114.5	120.5	126.5	132.5	138.6	144.6	150.6
Maximum Flue Gas Volume	m ³ /sec	0.57	0.61	0.65	0.69	0.73	0.77	0.81	0.85	0.89	0.94	0.98	1.02
Maximum Flue Gas Temperature at 9.5% CO ₂	°C	210	210	210	210	210	210	210	210	210	210	210	210
Seasonal Efficiency	%	84.29	84.23	84.91	84.26	84.33	84.55	84.48	84.73	84.53	84.34	84.64	84.97

OIL FIRING DATA

Maximum Oil Rate	l/h	82.73	88.64	94.55	100.5	106.4	112.3	118.2	124	130	135.9	142	147.7
Maximum Flue Gas Volume	m ³ /sec	0.51	0.55	0.59	0.62	0.66	0.7	0.73	0.77	0.81	0.84	0.88	0.92
Maximum Flue Gas Temperature at 13% CO ₂	°C	210	210	210	210	210	210	210	210	210	210	210	210
Seasonal Efficiency	%	87.70	87.60	88.30	87.60	87.70	87.90	87.90	88.10	87.90	87.90	88.00	88.40

MINIMUM FLOW RATES

Normal Water Flow Rate													
Temperature Difference 11°C (20°F)	l/s	17.6	18.9	20.1	21.4	22.6	23.9	25.2	26.4	27.7	28.9	30.2	21.5
Minimum Water Flow Rate													
Temperature Difference 35°C (63°F)	l/s	5.5	5.9	6.3	6.7	7.1	7.5	7.9	8.3	8.7	9.1	9.5	9.9

CONVERSIONS

• 1 kW = 3412 Btu/h	• 1m ³ /h = 35.315 ft ³ /h
• 1 litre = 0.22 gallons	• 1m ³ /sec = 2120 ft ³ /min
• 1 mbar = 0.4 in.w.g.	• 1l/h = 0.220 gal/h

*1 year warranty subject to Terms and Conditions.

GET A QUOTE     

idealheating.com | 01482 492251 | commercial@idealheating.com

welcome to our ideology