

AIR FILTER KIT

Imax Xtra EL 320-1240

These instructions must be read in conjunction with the Installation & Servicing Instructions supplied with the appliance.

NOTE. For appliance outputs from 715kW, two air filter kits will be required. Each kit to be fitted to the Master and Slave Modules.

This Air Filter Kit allows the installer to draw air from inside the building but prevent the appliance drawing in contaminants that may adversely affect the boiler performance and reliability. The room should be cleaned and the floors should be sealed to reduce the amount of contamination and prevent the filter blocking prematurely. For each service the filter should be checked and replaced if necessary.

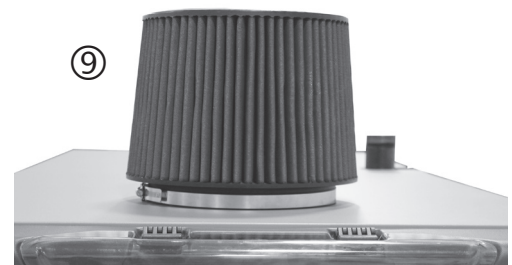
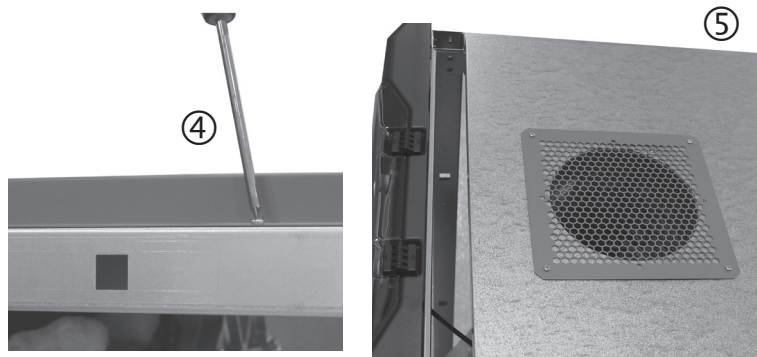
KIT CONTENTS

- Air Inlet Filter with retaining clip
- Air Inlet Spigot
- Air inlet Spigot Gasket



INSTALLING THE AIR INLET KIT

1. Remove the boiler front panel and control pod (refer to Installation Instructions).
2. Remove Locking Bracket at rear of boiler and Top infill panel.
3. Remove both front side panels (refer to Installation Instructions).
4. Remove the two screws that secure the painted top panel.
5. Remove air inlet grille (retain the screws to fix the Air Inlet Spigot).
6. Fit gasket to the spigot.
7. Fit the Air Inlet Spigot to the boiler by securing with three screws from the air inlet grille.
8. Refit all panels in reverse order.
9. Place the filter on top of the spigot and secure using the retaining clip.



Ideal Boilers Ltd., P.O. Box 103, National Avenue, Kingston upon Hull, HU5 4JN.
Telephone: 01482 492 251 Fax: 01482 448 858. Registration No. London 322 137.

March 2016 UIN 213911 A02



Ideal Boilers Ltd. pursues a policy of continuing improvement in the design and performance of its products. The right is therefore reserved to vary specification without notice.